

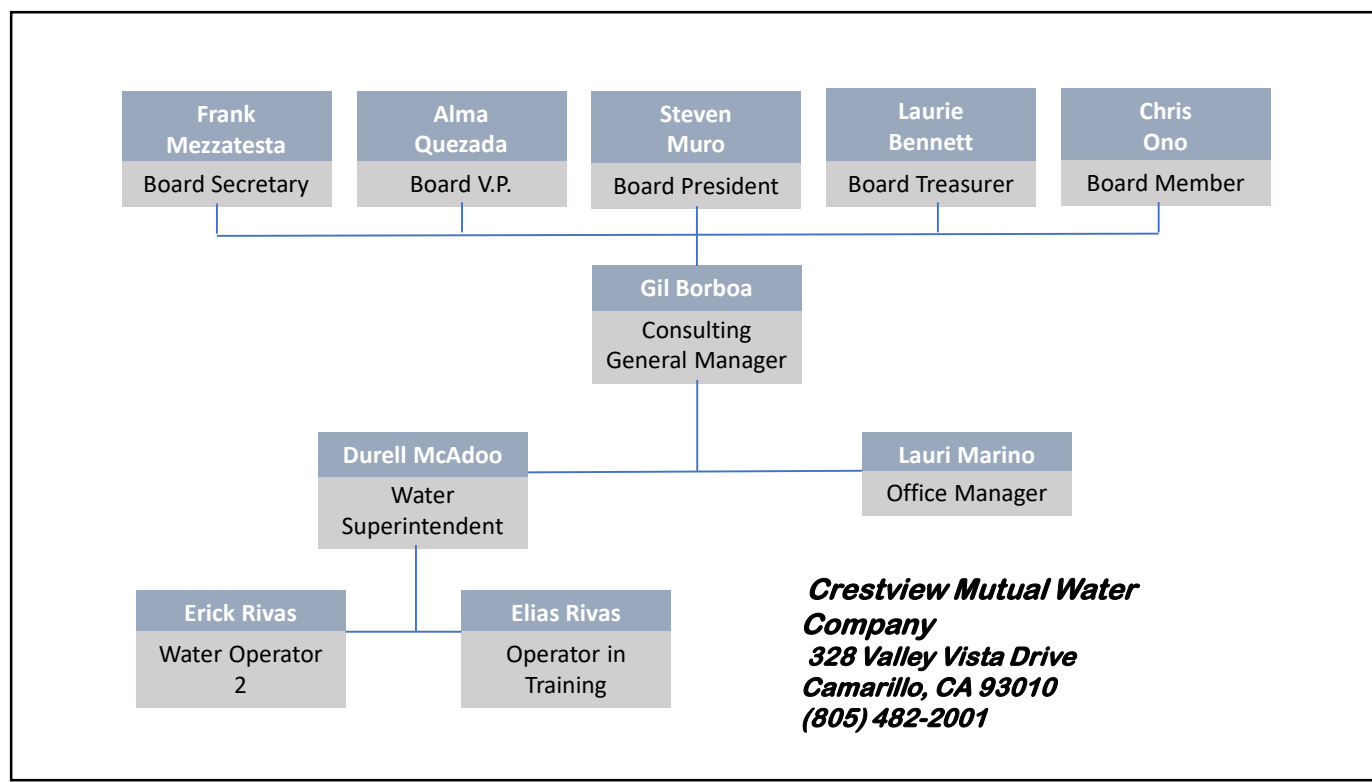
CRESTVIEW MUTUAL WATER COMPANY

Annual Shareholders Meeting

2026

Delivering Clean, Reliable Water to Our Community

1



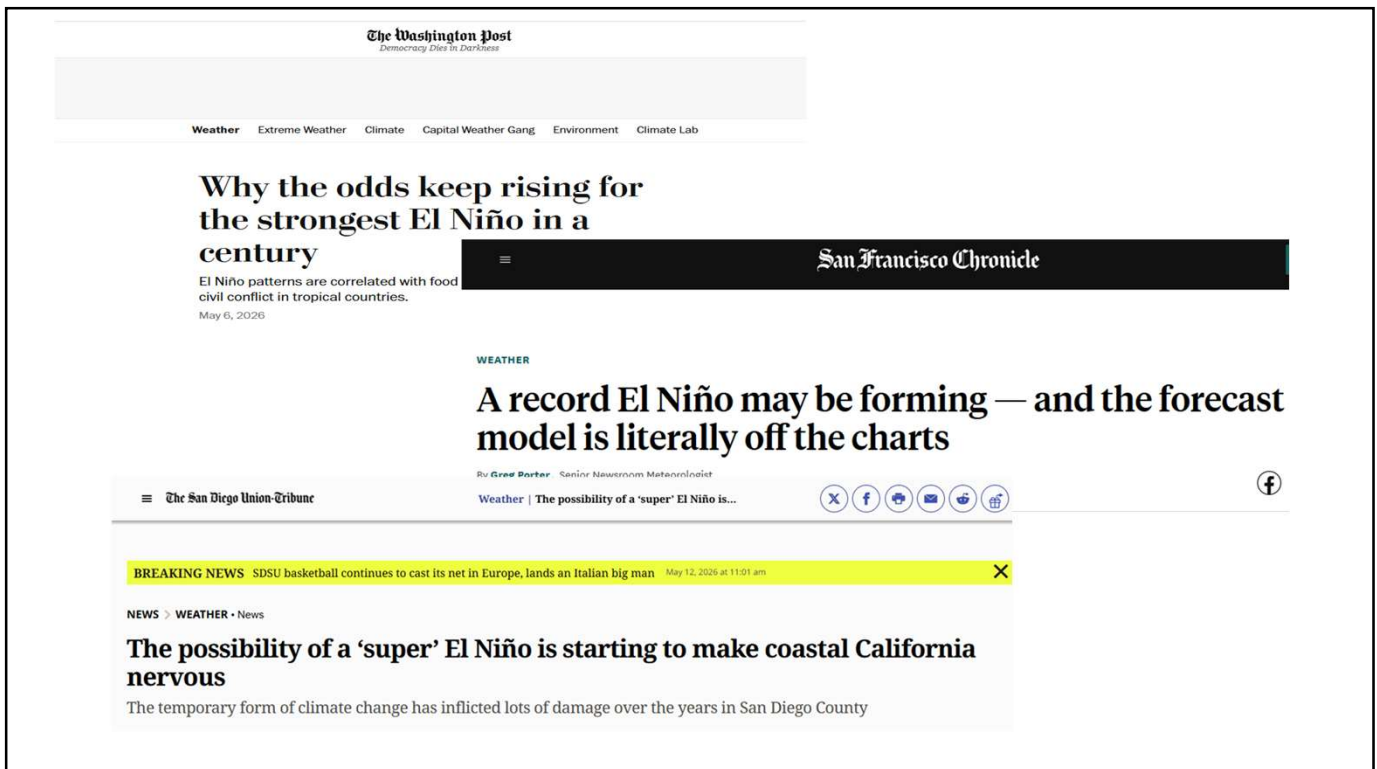
2



- WATER SUPPLY & TREATMENT
- DISTRIBUTION SYSTEM MANAGEMENT
- INFRASTRUCTURE MAINTENANCE
- REGULATORY COMPLIANCE AND MONITORING
- CUSTOMER SERVICE AND BILLING
- EMERGENCY RESPONSE
- WATER CONSERVATION

CRESTVIEW MUTUAL WATER COMPANY

3



The Washington Post
Democracy Dies in Darkness

Weather Extreme Weather Climate Capital Weather Gang Environment Climate Lab

Why the odds keep rising for the strongest El Niño in a century
El Niño patterns are correlated with food civil conflict in tropical countries.
May 6, 2026

San Francisco Chronicle

WEATHER

A record El Niño may be forming — and the forecast model is literally off the charts
By **Greg Porter** Senior Newsroom Meteorologist

The San Diego Union-Tribune
Weather | The possibility of a 'super' El Niño is...

BREAKING NEWS SDSU basketball continues to cast its net in Europe, lands an Italian big man May 12, 2026 at 11:01 am

NEWS > WEATHER • News

The possibility of a 'super' El Niño is starting to make coastal California nervous
The temporary form of climate change has inflicted lots of damage over the years in San Diego County

4

Did You Know?

Crestview Mutual Water Co.

- Your board is 100% volunteer based
- Crestview is required to comply with all water quality regulations, and many of the same administration and oversight duties as the largest water utilities
- You can help: Participate in the monthly board meetings
- Just reading the minutes? You are missing 95% of the picture (You will know “What” happened but not “Why”)

Year Established

1950

Service Connections

625+

Gallons / Year

225M

5

State of the Water Industry

Crestview Mutual Water Co.

- Los Angeles City has only one water purveyor: *Department of Water and Power (DWP)*
- Ventura county has a over 150+ water utilities
- Regulation for water is increasing = \$\$\$
- The state would like greater control over water
- Bureaucracy and fees inserted
- Crestview (and other water utilities) have had pumping rights reduced while fees increased
- Labor, insurance, electricity, supply costs, new regulations, fees = \$\$\$



6

Water Has Become Litigious



- Ventura County Groundwater Basins adjudication is a decades-long process
- Environmental groups have filed suits challenging federal water pumping from the Sacramento-San Joaquin Delta, alleging it threatens endangered fish species. [Center for Biological Diversity](#)
- In March 2026, nongovernmental organizations sued the Bureau of Reclamation over its operation of the Central Valley Project, alleging violations of the Endangered Species Act. [Every CRS Report](#)
- California is in a formal dispute with the federal government over Colorado River water allocation post-2026, though California has expressed preference for a negotiated solution rather than a court battle. [Imperial Valley Press Online](#)

Plus 6 new legal filings just last week!



7

Neighboring Agency Monthly Bill Comparison

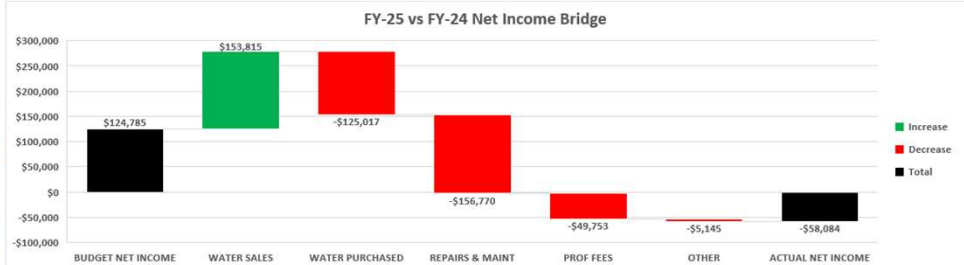


Based on Residential customer, 4 shares, 25000 gallons per month

8



INCOME STATEMENT	FY-25 vs FY-24 COMPARISON		
	2025 Unaudited	2024 Audited	CHANGE
Water (MG)	219.84	214.43	↑ 5.41
Water Sales	\$1,511,800	\$1,357,985	↑ \$153,815
Other Income	\$441,169	\$410,926	↑ \$30,243
TOTAL INCOME	\$1,952,969	\$1,768,911	↑ \$184,058
Water Purchased	\$260,503	\$103,733	↑ \$156,770
Professional Fees	\$214,899	\$89,882	↑ \$125,017
Repairs & Maintenance	\$74,776	\$25,023	↑ \$49,753
Other Expenses	\$1,460,874	\$1,425,487	↑ \$35,388
TOTAL EXPENSES	\$2,011,053	\$1,644,126	↑ \$366,927
NET INCOME	-\$58,084	\$124,785	↓ \$182,869



BALANCE SHEET	FY-25 vs FY-24 COMPARISON		
	2025	2024	CHANGE
Free Cash Flow [1]	\$1,509,950	\$1,669,014	↓ -\$159,063
Fixed Assets	\$3,979,510	\$4,001,529	↓ -\$22,019
Accounts Receivable	\$113,057	\$183,873	↓ -\$70,816
Accounts Payable	\$76,051	\$182,255	↓ -\$106,204
Working Capital [2]	\$1,788,283	\$1,624,349	↑ \$163,934
Working Capital Ratio [3]	12:1	6:1	

Notes:
 [1] Free Cash Flow includes General Checking, Money Market, and Savings Accounts within the Balance Sheet, excludes reserve and payroll accounts
 [2] Working Capital measures a company's ability to fund daily operations and meet short-term obligations; **Working Capital** = Current Assets - Current Liabilities
 [3] Target Ratio between 1.5:1 to 2.0:1

Final 2025 Audited results are scheduled to be available by May 31, 2026 per our accounting firm


9

INFRASTRUCTURE & PROJECTS




01	[Well #7] [Engineering work, Estimated Costs, Grants, Loans]	In Progress
02	[Calleguas Agreement] [Revising agreement, revising expected benefits, Watermaster]	In Progress
03	[Emergency Generators] [Board approved. Technical details being documented. Competitive bids being gathered]	In Progress
04	[5-Year Plan] [Your board continues to look long term]	A Living Document

10

INFRASTRUCTURE & PROJECTS **Crestview Mutual Water Co.**


05	[Well #4] [Third-party engineering to determine well longevity and productivity]	In Progress
06	[Sale of Real Estate at Well #8] [Part of Calleguas agreement]	Planned
07	[Service Available] [Bill Pay Online: automatically pay your bill]	Visit Our Website
04	[Service Available] [EyeOnWater app and online: monitor your water use, be notified for leaks]	Visit Our Website

11

Crestview Mutual Water Co.



Thank You

CRESTVIEW MUTUAL WATER COMPANY

office@crestviewwater.org | (805) 482-2001

328 Valley Vista Drive, Camarillo, CA 93010

www.crestviewwater.org



12